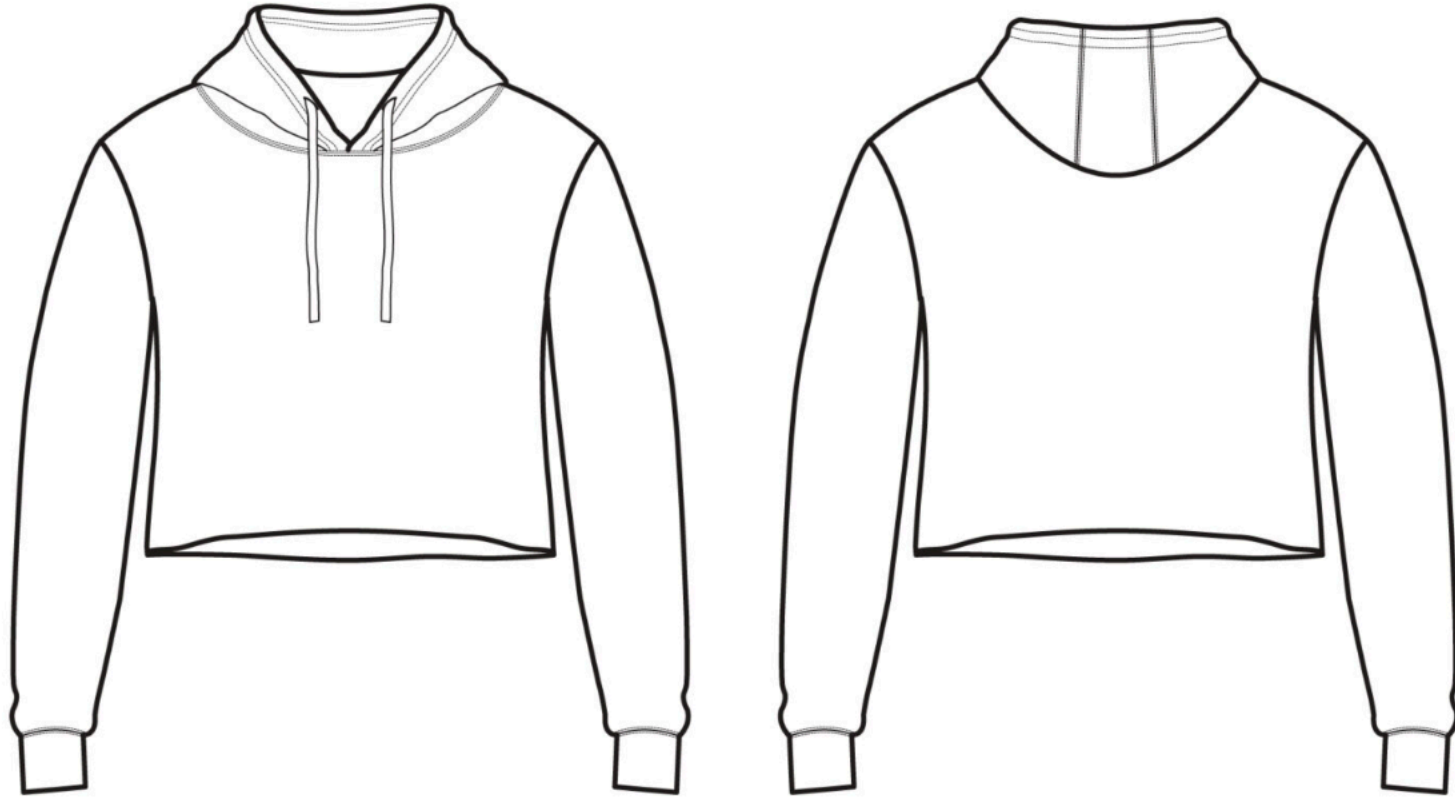




# LANE SEVEN

## MEASUREMENT SPECIFICATION SHEET



### STYLE #LS12000 - CROP HOODIE

#### FABRICATION

7.05 oz. (240 GSM)

Lightweight 3-End Fleece

85% Ringspun Cotton/15% Recycled Polyester

#### SPECIFICATIONS

##### POINTS OF MEASUREMENTS (Inches)

	XS	S	M	L	XL	2XL	3XL
Chest	20	22	24	26	X	X	X
Body Length (HPS)	17.5	18.5	19.25	20.25	X	X	X

##### Pricing Breakdown

Quantity	1-12	12-23	24-74	48-71	72-95	96-143	144-299	300-499	500-999	1000-2499	2500-10000
Price	\$24.99	\$13.13	\$12.69	\$12.25	\$11.81	\$11.38	\$10.94	\$10.50	\$10.06	\$9.63	\$9.19

Disclaimer: Please note that the above sizing chart is subject to change. For more detailed information, please contact a Lane Seven Customer Service Representative.